

Special Fences Tutorial



Created By: MikeInside

About this PDF Document

This tutorial is Copyrighted and graded by MikeInside

Original tutorial can be found here

<http://mikeinside.modthesims2.com/building/specialfences/index.html>

Other MikeInside's tutorials

<http://mikeinside.modthesims2.com/tutorials.html>

This PDF Document is graded by Bissela (bissela at hotmail.com)

NOTE!! I'm NOT the author off this tutorial.

PDF Document created with OpenOffice.org 1.1.4 (WIN32)

<http://www.openoffice.org>

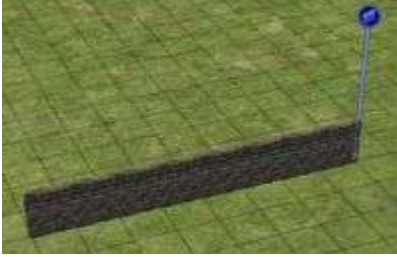

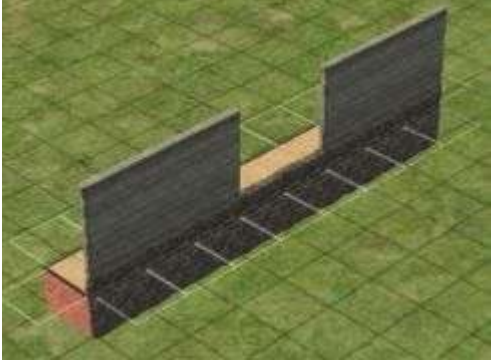
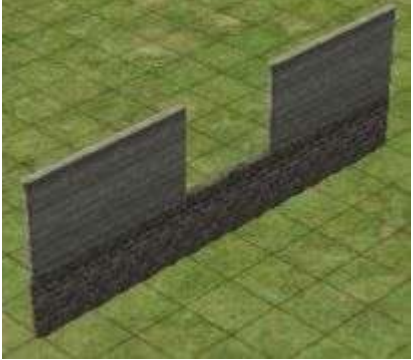
There are reference's to other tutorials in this document.

Those reference's are marked as follows:

[Text](#)

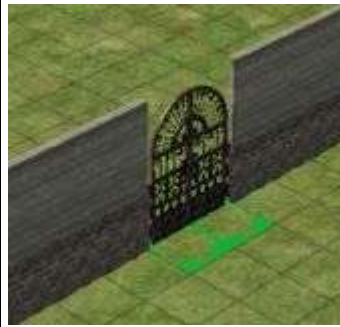
Links to reference's will be at the end of the document.

TankGrunt from thesims2resource was the first person to try putting fences on top of each other, so thanks to him for inspiring this tute :)

<p>1)</p> <p>Ok lets start off with something simple, build a stone wall fence.</p>	 A simple stone wall fence is built on a green lawn. A blue pin is visible at the end of the wall.
<p>2)</p> <p>Add a foundation behind it.</p>	 A foundation is added behind the stone wall fence. The foundation is a light brown color and is placed on the green lawn.
<p>3)</p> <p>On top of the foundation, add the grey brick wall, but leave a 2 square gap.</p>	 A grey brick wall is added on top of the foundation. The wall is dark grey and has a 2 square gap in the middle. The foundation is still visible behind the wall.
<p>4)</p> <p>Hold down CTRL and use the foundation tool to delete the foundation.</p>	 The foundation is deleted, leaving the grey brick wall on the lawn. The wall is now directly on the green lawn.

5)

Add a gate in the middle, and your first custom fence is complete!



Try using different types of fences, to get different effects.

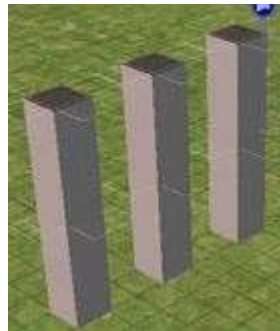
For example, this fence from the [Romano](#) house used the two kinds of dark wood fencing, and has had columns and bamboo added to it.



Time to try a more advanced kind of fence...

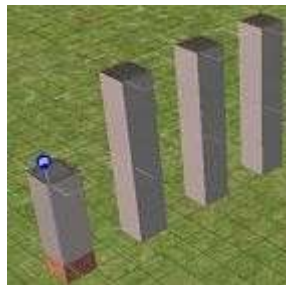
1)

Start off by building a couple of 1x1 rooms, each 2 squares apart, and 2 levels high.



2)

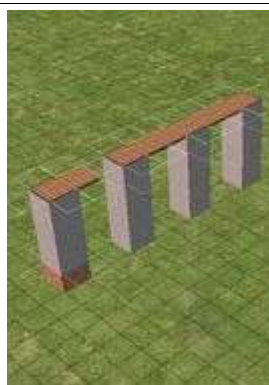
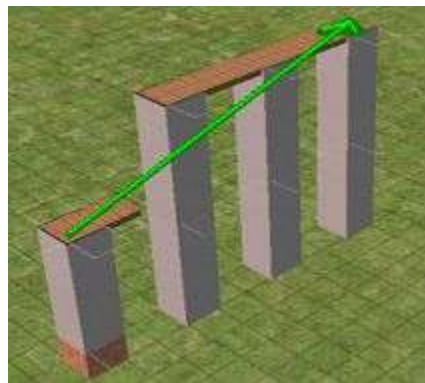
2 squares away from them, build another 1x1 room on top of a block of foundation



Next, you will need to turn on a building cheat.
Here is how to do it:
To enter in cheats, press and hold down **CTRL, SHIFT** and **C**.
You should see a small white box appear in the top left corner of the screen.
Type in **boolProp constrainFloorElevation false** and press enter.
This will allow you to change terrain, even when there are objects on it.
Careful, this cheat can screw up a house, so only use it where specified.

3)

Drag a floortile from the lowest pylon to the end one. This should flatten the whole structure.

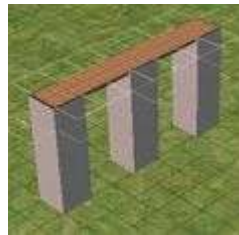


4)

Turn off the cheat by hitting CTRL-SHIFT-C and typing:

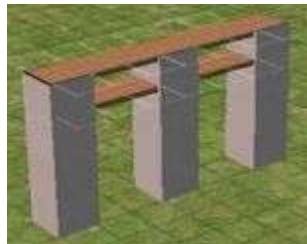
**boolProp
constrainFloorElevation true**

Now delete the floor, then the walls, then the foundation of the last pylon, so you are only left with the first three.



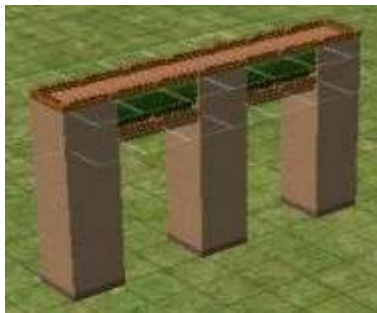
5)




Add some more floortiles to the inbetween layer.



6)

You can add a hedge into the middle layer by using the **moveObjects on** cheat. Some small fences can also make this structure look better. And you are done!



<p>If you are feeling adventurous, you could try making a whole structure out of these!</p>	
<p>The Romano house also uses this kind of fence for its patio. The roof was done by using the Curved Roof tutorial.</p>	
<p>Notice the wooden lattice on this house. It was made by using the same techniques described in this tutorial.</p>	

These are just some small examples of the ways you can get creative with fences. So experiment, and see what you can come up with!

Reference links:

Romano: <http://mikeinside.modthesims2.com/houses/romano/index.html>

Curved Roof: <http://mikeinside.modthesims2.com/building/curvedroof/index.html>